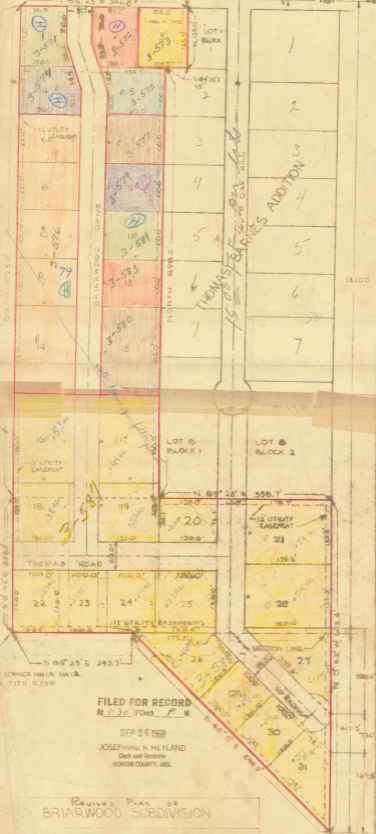


STARTING POINT NE CORNER
NW 1/4 SW 1/4 S7, T17N, R33W

BEGINNING POINT

E RAINES ROAD N 89° 23' W 546.8' 205' 725'



SOUTH 028.0'

50' 42.0' 288.0'

SW CORNER NW 1/4 NW 1/4
S7, T17N, R33W

FILED FOR RECORD
At 1:30 O'Clock P. M.

SEP 26 1968

JOSEPHINE K. HEYLAND
Clerk and Recorder
BENTON COUNTY, ARK.

Revised Plat of
BRIARWOOD SUBDIVISION

SLOAN SPRINGS, ARKANSAS