

2006-1194

**BRIEF DESCRIPTION (SUBJECT MATTER)**

A PART OF THE AREA OF THE SECTION AND A PART OF THE CORNER OF THE SECTION AND A PART OF THE FRACTURED, SW 1/4 OF SECTION 18, T42N, R13E, W3E, BENTON COUNTY, MISSOURI, MORE PARTICULARLY DESCRIBED AS FOLLOWS:

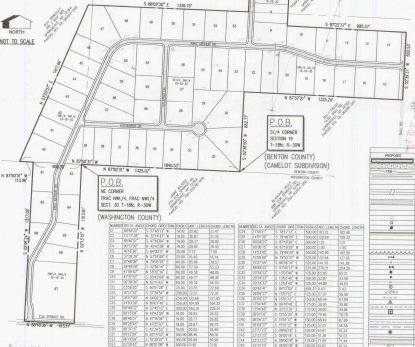
BEING: A PART OF THE SECTION AND A PART OF THE CORNER OF THE SECTION AND A PART OF THE FRACTURED, SW 1/4 OF SECTION 18, T42N, R13E, W3E, BENTON COUNTY, MISSOURI, MORE PARTICULARLY DESCRIBED AS FOLLOWS: BEING: A PART OF THE SECTION AND A PART OF THE CORNER OF THE SECTION AND A PART OF THE FRACTURED, SW 1/4 OF SECTION 18, T42N, R13E, W3E, BENTON COUNTY, MISSOURI, MORE PARTICULARLY DESCRIBED AS FOLLOWS: BEING: A PART OF THE SECTION AND A PART OF THE CORNER OF THE SECTION AND A PART OF THE FRACTURED, SW 1/4 OF SECTION 18, T42N, R13E, W3E, BENTON COUNTY, MISSOURI, MORE PARTICULARLY DESCRIBED AS FOLLOWS: BEING: A PART OF THE SECTION AND A PART OF THE CORNER OF THE SECTION AND A PART OF THE FRACTURED, SW 1/4 OF SECTION 18, T42N, R13E, W3E, BENTON COUNTY, MISSOURI, MORE PARTICULARLY DESCRIBED AS FOLLOWS: BEING: A PART OF THE SECTION AND A PART OF THE CORNER OF THE SECTION AND A PART OF THE FRACTURED, SW 1/4 OF SECTION 18, T42N, R13E, W3E, BENTON COUNTY, MISSOURI, MORE PARTICULARLY DESCRIBED AS FOLLOWS: BEING: A PART OF THE SECTION AND A PART OF THE CORNER OF THE SECTION AND A PART OF THE FRACTURED, SW 1/4 OF SECTION 18, T42N, R13E, W3E, BENTON COUNTY, MISSOURI, MORE PARTICULARLY DESCRIBED AS FOLLOWS: BEING: A PART OF THE SECTION AND A PART OF THE CORNER OF THE SECTION AND A PART OF THE FRACTURED, SW 1/4 OF SECTION 18, T42N, R13E, W3E, BENTON COUNTY, MISSOURI, MORE PARTICULARLY DESCRIBED AS F.O.L.S. SUBJECT TO ANY EASEMENTS, EASEMENTS OR RESTRICTIONS OF RECORD OR IN FACT.

**FLOOD INFORMATION**

THIS PROPERTY IS NOT LOCATED WITHIN A PREVIOUSLY DESIGNATED 100-YEAR FLOOD PLAIN, AS DETERMINED BY THE NATIONAL FLOOD INSURANCE PROGRAM. FLOOD INSURANCE MAY BE AVAILABLE THROUGH THE NATIONAL FLOOD INSURANCE PROGRAM. CONTACT: 1-800-456-7890

**NOTE:**  
P.O.B. WILL BE RESPONSIBLE FOR THE DESIGN OF THE SUBDIVISION.  
PHONE 616-7548  
2500 SOUTH MAIN ST.  
WINDYBROOK - LOUISIA, LA. 70089

**NORTH**  
**NOT TO SCALE**



*NOTE:*  
Not discontinuing use, because. Key plan Consult the architect to file or apply. Have additional information.

NUMBER	AREA	DIST	BEARING	AREA	DIST	BEARING	AREA	DIST	BEARING	AREA	DIST	BEARING
C1	0.0000	0.0000	0.0000	0.0000	0.0000	0.0000	0.0000	0.0000	0.0000	0.0000	0.0000	0.0000
C2	0.0000	0.0000	0.0000	0.0000	0.0000	0.0000	0.0000	0.0000	0.0000	0.0000	0.0000	0.0000
C3	0.0000	0.0000	0.0000	0.0000	0.0000	0.0000	0.0000	0.0000	0.0000	0.0000	0.0000	0.0000
C4	0.0000	0.0000	0.0000	0.0000	0.0000	0.0000	0.0000	0.0000	0.0000	0.0000	0.0000	0.0000
C5	0.0000	0.0000	0.0000	0.0000	0.0000	0.0000	0.0000	0.0000	0.0000	0.0000	0.0000	0.0000
C6	0.0000	0.0000	0.0000	0.0000	0.0000	0.0000	0.0000	0.0000	0.0000	0.0000	0.0000	0.0000
C7	0.0000	0.0000	0.0000	0.0000	0.0000	0.0000	0.0000	0.0000	0.0000	0.0000	0.0000	0.0000
C8	0.0000	0.0000	0.0000	0.0000	0.0000	0.0000	0.0000	0.0000	0.0000	0.0000	0.0000	0.0000
C9	0.0000	0.0000	0.0000	0.0000	0.0000	0.0000	0.0000	0.0000	0.0000	0.0000	0.0000	0.0000
C10	0.0000	0.0000	0.0000	0.0000	0.0000	0.0000	0.0000	0.0000	0.0000	0.0000	0.0000	0.0000
C11	0.0000	0.0000	0.0000	0.0000	0.0000	0.0000	0.0000	0.0000	0.0000	0.0000	0.0000	0.0000
C12	0.0000	0.0000	0.0000	0.0000	0.0000	0.0000	0.0000	0.0000	0.0000	0.0000	0.0000	0.0000
C13	0.0000	0.0000	0.0000	0.0000	0.0000	0.0000	0.0000	0.0000	0.0000	0.0000	0.0000	0.0000
C14	0.0000	0.0000	0.0000	0.0000	0.0000	0.0000	0.0000	0.0000	0.0000	0.0000	0.0000	0.0000
C15	0.0000	0.0000	0.0000	0.0000	0.0000	0.0000	0.0000	0.0000	0.0000	0.0000	0.0000	0.0000
C16	0.0000	0.0000	0.0000	0.0000	0.0000	0.0000	0.0000	0.0000	0.0000	0.0000	0.0000	0.0000
C17	0.0000	0.0000	0.0000	0.0000	0.0000	0.0000	0.0000	0.0000	0.0000	0.0000	0.0000	0.0000
C18	0.0000	0.0000	0.0000	0.0000	0.0000	0.0000	0.0000	0.0000	0.0000	0.0000	0.0000	0.0000
C19	0.0000	0.0000	0.0000	0.0000	0.0000	0.0000	0.0000	0.0000	0.0000	0.0000	0.0000	0.0000
C20	0.0000	0.0000	0.0000	0.0000	0.0000	0.0000	0.0000	0.0000	0.0000	0.0000	0.0000	0.0000
C21	0.0000	0.0000	0.0000	0.0000	0.0000	0.0000	0.0000	0.0000	0.0000	0.0000	0.0000	0.0000
C22	0.0000	0.0000	0.0000	0.0000	0.0000	0.0000	0.0000	0.0000	0.0000	0.0000	0.0000	0.0000
C23	0.0000	0.0000	0.0000	0.0000	0.0000	0.0000	0.0000	0.0000	0.0000	0.0000	0.0000	0.0000
C24	0.0000	0.0000	0.0000	0.0000	0.0000	0.0000	0.0000	0.0000	0.0000	0.0000	0.0000	0.0000
C25	0.0000	0.0000	0.0000	0.0000	0.0000	0.0000	0.0000	0.0000	0.0000	0.0000	0.0000	0.0000
C26	0.0000	0.0000	0.0000	0.0000	0.0000	0.0000	0.0000	0.0000	0.0000	0.0000	0.0000	0.0000
C27	0.0000	0.0000	0.0000	0.0000	0.0000	0.0000	0.0000	0.0000	0.0000	0.0000	0.0000	0.0000
C28	0.0000	0.0000	0.0000	0.0000	0.0000	0.0000	0.0000	0.0000	0.0000	0.0000	0.0000	0.0000
C29	0.0000	0.0000	0.0000	0.0000	0.0000	0.0000	0.0000	0.0000	0.0000	0.0000	0.0000	0.0000
C30	0.0000	0.0000	0.0000	0.0000	0.0000	0.0000	0.0000	0.0000	0.0000	0.0000	0.0000	0.0000
C31	0.0000	0.0000	0.0000	0.0000	0.0000	0.0000	0.0000	0.0000	0.0000	0.0000	0.0000	0.0000
C32	0.0000	0.0000	0.0000	0.0000	0.0000	0.0000	0.0000	0.0000	0.0000	0.0000	0.0000	0.0000

- OWNER CLASSIFICATION:** 1-1
- PROJECT USE:** RESIDENTIAL
- CONVEYOR:** F&B BAYNAR, TRUSTEE 325.866.8524 478-720-7336
- OWNER:** RESTITUTE LODGE TRUST, INC 1785 CRYSTAL BL, SUITE 100 PARKERSBURG, WV 26107 PHONE: 478-444-1733 FAX: 478-444-6528
- BOUNDARY INFORMATION:** PROPERTY CORNER PIN AT NE CORNER CORNER CORNER NEAR ROAD NORTH - 800 FT LONG EAST - 600 FT LONG SOUTH - 800 FT LONG
- BOUNDING SURVEY REQUIREMENTS:** PLANNED TO BE A DEDICATED ROAD. BEING 20' TO 40' WIDE AS SHOWN ON DRAWING.
- BASE OF RECORD:** BENTON COUNTY PLAT BOOK 2284 PAGE 10
- AREA OF PORTAL:** SECTION 18: 1180' X 200' NW 1/4: 28.12' X 162.3' NE 1/4: 1180' X 162.3' SW 1/4: 28.12' X 162.3' SECTION 19: 1180' X 200' NW 1/4: 28.12' X 162.3'
- NOTE:** STREET ADDRESS: 3600 S. FARM LANE S.W. NEAR 1000' W. TO NE 1/4 CORNER OF SECTION 19. ON 1000' W. OF S.W. 1/4 CORNER THROUGH THE CORNER.

**STATE OF MISSOURI**

IN WITNESS WHEREOF, I have hereunto set my hand and the seal of the State of Missouri, at Jefferson, Missouri, this 20th day of August, 2006.

GOVERNOR

MISSOURI REGISTERED PROFESSIONAL SURVEYORS

STATE OF MISSOURI

REGISTERED PROFESSIONAL SURVEYORS

REGISTERED

STATE OF MISSOURI

REGISTERED PROFESSIONAL SURVEYORS

REGISTERED

STATE OF MISSOURI

REGISTERED PROFESSIONAL SURVEYORS

REGISTERED

STATE OF MISSOURI

REGISTERED PROFESSIONAL SURVEYORS

REGISTERED

STATE OF MISSOURI

REGISTERED PROFESSIONAL SURVEYORS

REGISTERED

2005 1194  
 Registered by the Surveyor  
 Plat Book 676  
 20-06-001-001-001-001  
 Statewide-Circuit Court  
 Benton County, MO



DATE	BY	DESCRIPTION
		CAMELOT SUBDIVISION
		FINAL PLAT
		Prepared For:
		F&B BAYNAR, TRUSTEE
		P.O. Box 6290
		SPRINGDALE, AR 72786

MISSOURI REGISTERED PROFESSIONAL SURVEYORS

Statewide-Circuit Court  
 Planning & Grading

Drawn: COLWELL 9/14/06  
 Check: S. BATES  
 Sheet No: 1 of 4  
 04005-00  
 2006-1194