

PLANING BOARD CHAIRMAN
 DATE 4-28-04
 THIS PLAN HAS BEEN REVIEWED AND APPROVED BY THE BOARD OF PROFESSIONAL ENGINEERS OF THE STATE OF ARKANSAS. THE BOARD HAS FOUND THAT THIS PLAN MEETS THE REQUIREMENTS OF THE PROFESSIONAL ENGINEERING ACT, CHAPTER 15, ARS, AND THE RULES AND REGULATIONS OF THE BOARD. THE BOARD IS NOT RESPONSIBLE FOR THE ACCURACY OF THE DATA OR THE DESIGN OF THE PROJECT. THE ENGINEER IS RESPONSIBLE FOR THE ACCURACY OF THE DATA AND THE DESIGN OF THE PROJECT. THE BOARD IS NOT RESPONSIBLE FOR THE ACCURACY OF THE DATA OR THE DESIGN OF THE PROJECT.

REGISTERED PROFESSIONAL ENGINEER
 NO. 10092
 Thomas A. Henry



ORIGINAL

Recorded in the Above
 Plat Book & Page
 15-21-2004 10:47:49 AM
 Brenda DeShields-Circuit Clerk
 Benton County, AR

CERTIFICATE OF AUTHORIZATION
TOMLINSON ASPHALT COMPANY INC. NO. 796
 ARKANSAS ENGINEERS

CURVE LENGTH TABLE

STATION	CHORD BEARING	CHORD LENGTH
C1	S 73°52'57" W	102.70
C2	S 73°52'57" W	102.70
C3	S 73°52'57" W	102.70
C4	S 73°52'57" W	102.70
C5	S 73°52'57" W	102.70
C6	S 73°52'57" W	102.70
C7	S 73°52'57" W	102.70
C8	S 73°52'57" W	102.70
C9	S 73°52'57" W	102.70
C10	S 73°52'57" W	102.70
C11	S 73°52'57" W	102.70
C12	S 73°52'57" W	102.70
C13	S 73°52'57" W	102.70
C14	S 73°52'57" W	102.70
C15	S 73°52'57" W	102.70
C16	S 73°52'57" W	102.70
C17	S 73°52'57" W	102.70

REVISIONS

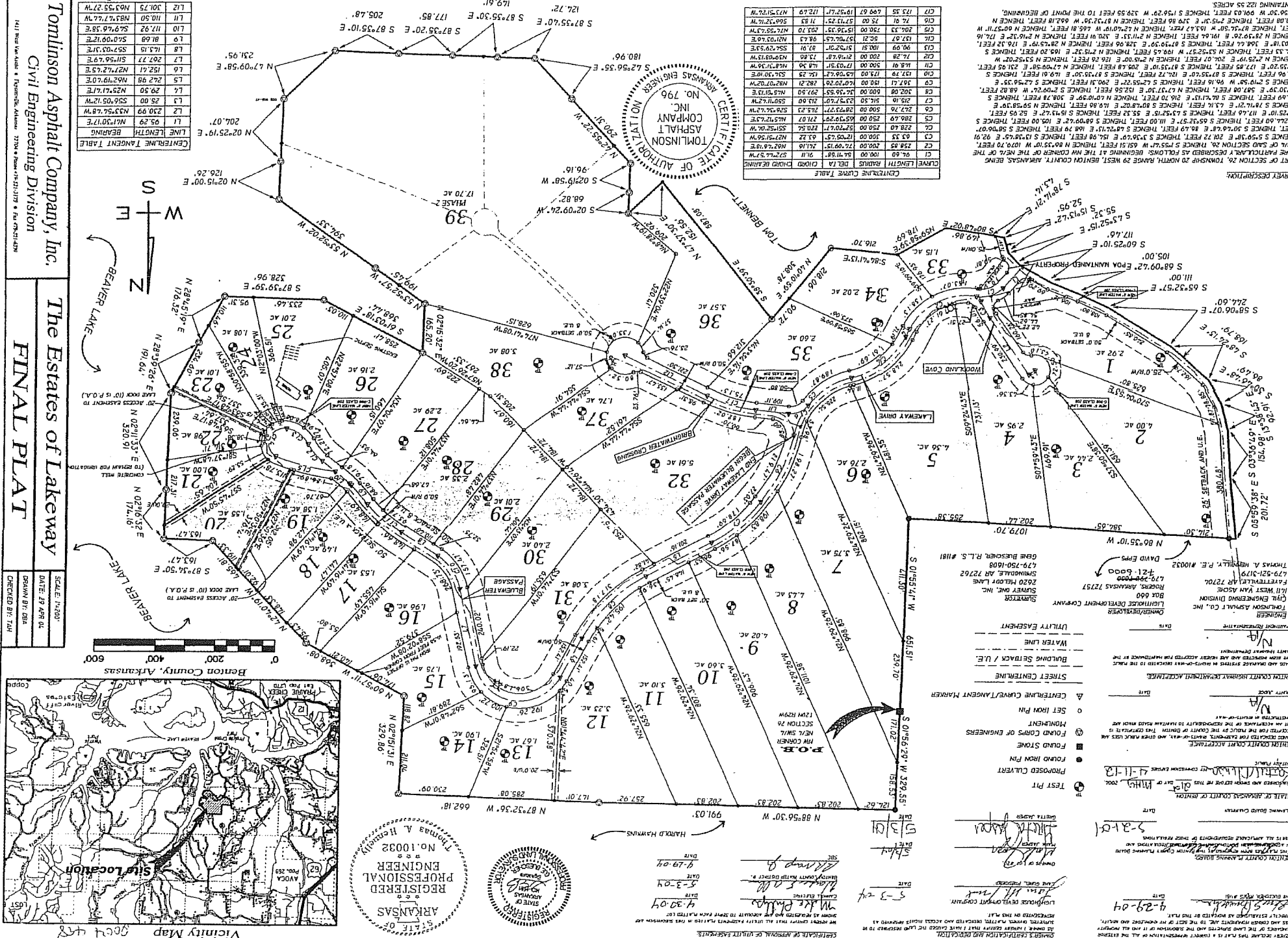
NO.	DATE	DESCRIPTION
1	4-28-04	AS NOTED

STATE OF ARKANSAS COUNTY OF BENTON
 DIVISION OF CIVIL ENGINEERING
 BENTON COUNTY ASPHALT CO., INC.
 ENGINEER

UTILITY EASEMENT
 WATER LINE
 BUILDING SETBACK / U.E.
 STREET CENTERLINE
 CENTERLINE CURVE/TANGENT MARKER
 SET IRON PIN
 MONUMENT
 FOUND CORNERS OF ENGINEERS
 FOUND STONE
 FOUND IRON PIN
 PROPOSED CURBERT
 TEST PIT

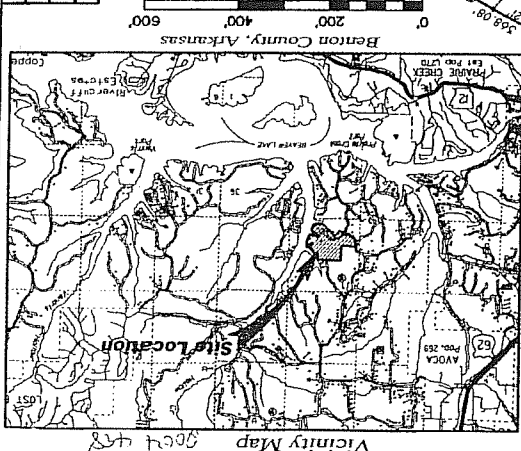
PLANNING BOARD CHAIRMAN
 DATE 4-28-04
 THIS PLAN HAS BEEN REVIEWED AND APPROVED BY THE BOARD OF PROFESSIONAL ENGINEERS OF THE STATE OF ARKANSAS. THE BOARD HAS FOUND THAT THIS PLAN MEETS THE REQUIREMENTS OF THE PROFESSIONAL ENGINEERING ACT, CHAPTER 15, ARS, AND THE RULES AND REGULATIONS OF THE BOARD. THE BOARD IS NOT RESPONSIBLE FOR THE ACCURACY OF THE DATA OR THE DESIGN OF THE PROJECT. THE ENGINEER IS RESPONSIBLE FOR THE ACCURACY OF THE DATA AND THE DESIGN OF THE PROJECT. THE BOARD IS NOT RESPONSIBLE FOR THE ACCURACY OF THE DATA OR THE DESIGN OF THE PROJECT.

REGISTERED PROFESSIONAL ENGINEER
 NO. 10092
 Thomas A. Henry



CENTERLINE TANGENT TABLE

STATION	CHORD BEARING	CHORD LENGTH
T1	S 73°52'57" W	102.70
T2	S 73°52'57" W	102.70
T3	S 73°52'57" W	102.70
T4	S 73°52'57" W	102.70
T5	S 73°52'57" W	102.70
T6	S 73°52'57" W	102.70
T7	S 73°52'57" W	102.70
T8	S 73°52'57" W	102.70
T9	S 73°52'57" W	102.70
T10	S 73°52'57" W	102.70
T11	S 73°52'57" W	102.70
T12	S 73°52'57" W	102.70
T13	S 73°52'57" W	102.70
T14	S 73°52'57" W	102.70
T15	S 73°52'57" W	102.70
T16	S 73°52'57" W	102.70
T17	S 73°52'57" W	102.70
T18	S 73°52'57" W	102.70
T19	S 73°52'57" W	102.70
T20	S 73°52'57" W	102.70
T21	S 73°52'57" W	102.70
T22	S 73°52'57" W	102.70
T23	S 73°52'57" W	102.70
T24	S 73°52'57" W	102.70
T25	S 73°52'57" W	102.70
T26	S 73°52'57" W	102.70
T27	S 73°52'57" W	102.70
T28	S 73°52'57" W	102.70
T29	S 73°52'57" W	102.70
T30	S 73°52'57" W	102.70
T31	S 73°52'57" W	102.70
T32	S 73°52'57" W	102.70
T33	S 73°52'57" W	102.70
T34	S 73°52'57" W	102.70
T35	S 73°52'57" W	102.70
T36	S 73°52'57" W	102.70
T37	S 73°52'57" W	102.70
T38	S 73°52'57" W	102.70
T39	S 73°52'57" W	102.70

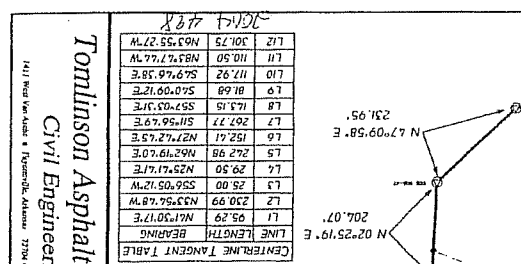


TOMLINSON ASPHALT COMPANY, INC.
 Civil Engineering Division
 3300 Forum Center Dr., Little Rock, AR 72218

The Estates of Lakeway
FINAL PLAT

SCALE: 1"=200'
 DATE: 4/28/04
 DRAWN BY: GBE
 CHECKED BY: TAH

Tomlinson Asphalt Company, Inc.



BEAVER LAKE

0 200 400 600

S
E
W
N

