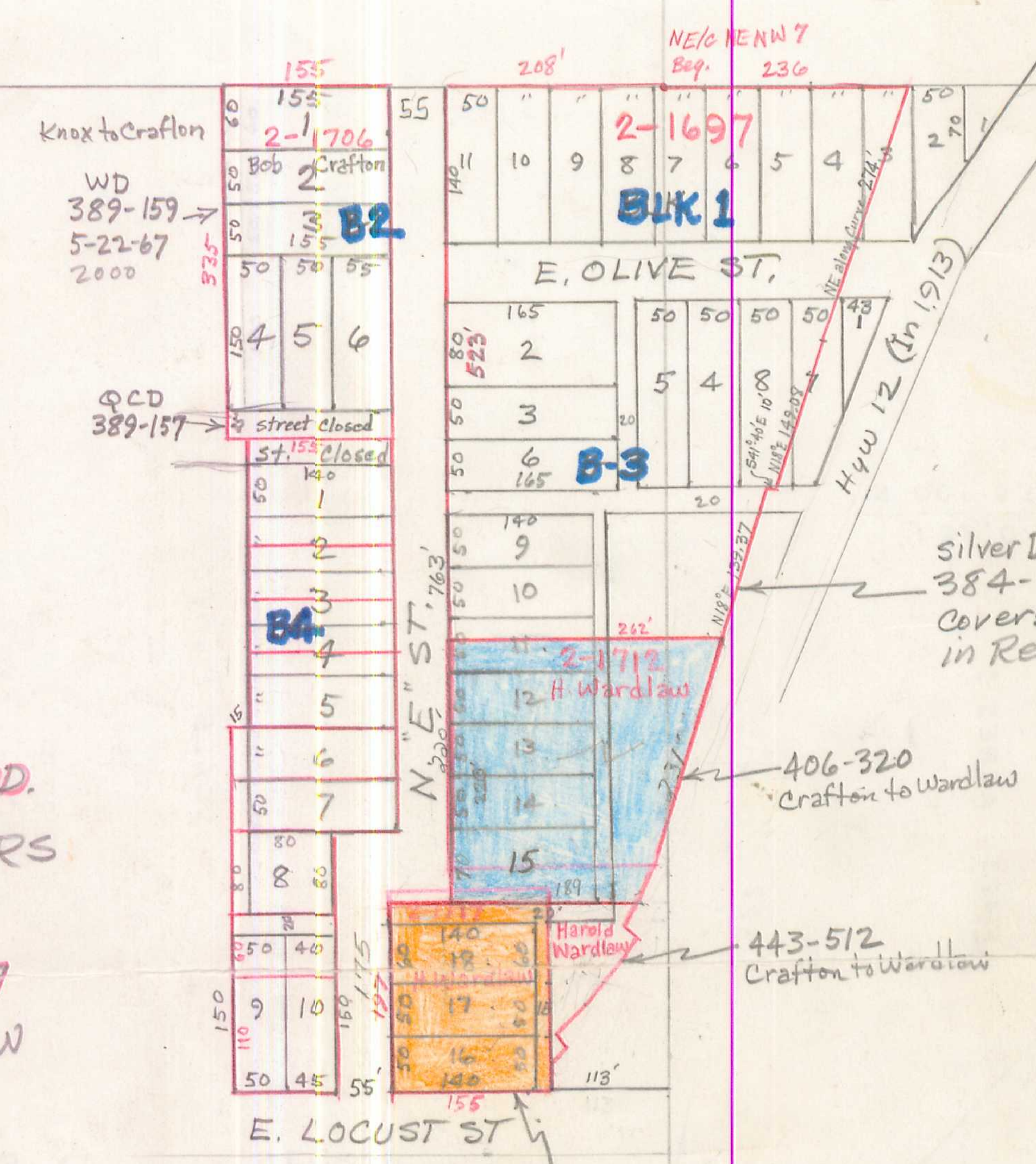


Revised
FAIRVIEW ADD.
CITY OF ROGERS
Mar. 7, 1913

NE NW Sec 7
T-19-N, R-29-W



Knox to Crafton
WD
389-159
5-22-67
2000

QCD
389-157
street closed

NE 1/4 NE NW 7
Bsq. 236

E. OLIVE ST.

N 1/2 E ST. 763'

E. LOCUST ST

Hwy 12 (In 1913)

Silver Dollar Homes to Crafton
384-21
Covers entire 6Act, circled
in Red (Top 3 Tracts).

406-320
Crafton to Wardlaw

443-512
Crafton to Wardlaw

432-90
Bender to Wardlaw
.7 Ac.
367

SEC
NE NW
7-19-29

NE SW