

ARKANSAS HIGHWAY 77
 775420, 2002
 E. 841332, 2000

2007 Declaration for this Plat to be in Compliance with Public Law
 (Not Required) For Book 2007, Page 3847

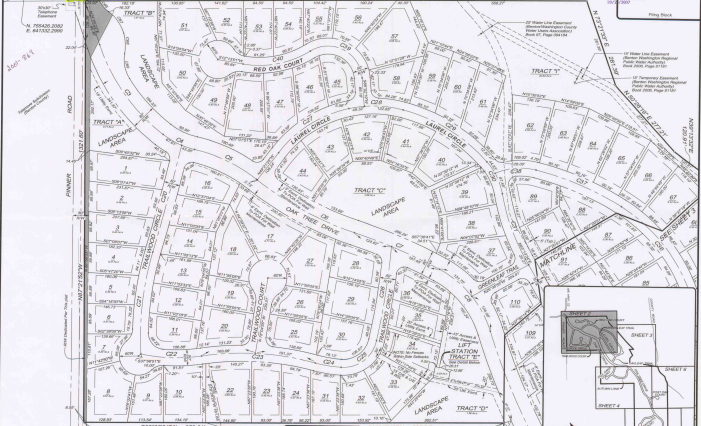
POINT OF BEGINNING
 SW Corner
 Sec. 14, S21, E14
 Section 21, 7-20-N, R-31-W
 N. 775420, 2002
 E. 841332, 2000

James F. &
 Dorothy E. Bink
 (Division County)



SW Corner
 NE 1/4, S21, E14
 Sec. 21, 7-20-N, R-31-W

Book 2007, Page 3847
 Book 21, 2007-102
 First Class L.P. 10047-0, 2003
 147-2007-212011070
 Total Area: 835.00
 Book 2010, Page 81-6-W
 Plat in 182, 2006
 2007-2008-1
 2007-2008-1



SW Corner
 Section 22
 7-20-N, R-31-W

LINE LEGEND

- Private Line
- Right-of-Way Line
- Public Right-of-Way
- Contour
- Easement Line
- Building Footprint Line

TRACT "E" DETAIL



SW Corner
 S1/4, S21, E14
 Sec. 22, 7-20-N, R-31-W

SW Corner
 NE 1/4, S21, E14
 Sec. 21, 7-20-N, R-31-W

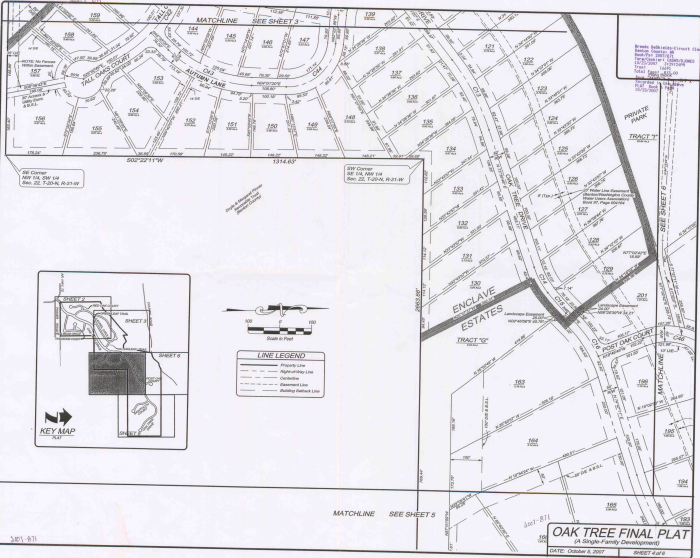


KEY MAP
 PLAT

OAK TREE FINAL PLAT
 (A Single-Family Development)

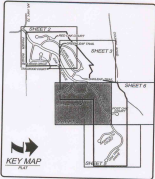
DATE: October 5, 2007 SHEET 2 of 6

Brandegee Subdivision-Circuit Court
Case No. 03-00000000
Case No. 03-00000000
Case No. 03-00000000
Case No. 03-00000000
Case No. 03-00000000
Case No. 03-00000000
Case No. 03-00000000
Case No. 03-00000000
Case No. 03-00000000
Case No. 03-00000000



SW Corner
S87°04'58"W 64'
Sec. 22, T-20-N, R-21-W

SW Corner
S87°04'58"W 64'
Sec. 22, T-20-N, R-21-W



KEY MAP
PLAT



LINE LEGEND	
	Property Line
	Right-of-Way Line
	Conduite
	Easement Line
	Building setback Line

MATCHLINE SEE SHEET 5

OAK TREE FINAL PLAT
(A Single-Family Development)
DATE: October 6, 2007 SHEET 4 of 8

