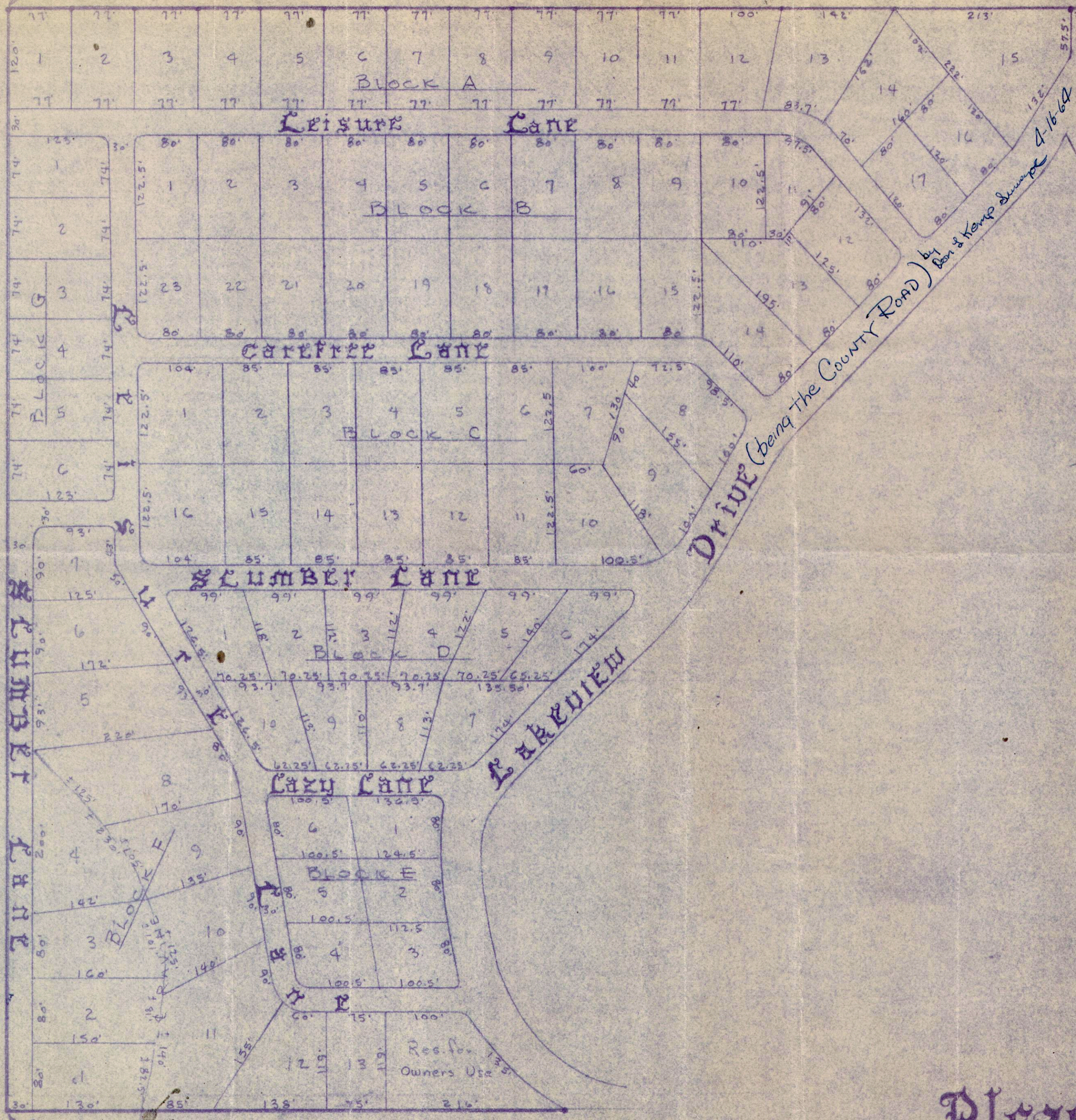


NW COR. NE 1/4, NE 1/4
SEC. 13, T-18-N, R-29-W

NE COR. NE 1/4
NE 1/4 SEC. 13, T-18-N,
R-29-W



CERTIFICATION & DEDICATION

WE, THE UNDERSIGNED, DO HEREBY CERTIFY THAT WE ARE THE SOLE OWNERS OF THE HEREON DESCRIBED PROPERTY & WE DO HEREBY DEDICATE THE STREETS & EASEMENTS FOR THE USE OF THE PUBLIC.

Charles P. ... *Leta ...*

SUBSCRIBED & SWORN TO BEFORE ME, THIS 30 DAY OF May, 1963

MY COMMISSION EXPIRES July 27, 1963
Notary Public

ACCEPTANCE

ACCEPTED THIS 30 DAY OF May, 1963

Samuel ...
COUNTY JUDGE

LEGAL DESCRIPTION

ALL THAT PART OF THE NE 1/4 OF THE NE 1/4 OF SEC. 13, T-18-N, R-29-W, BENTON Co, ARKANSAS, WHICH LIES NORTH & WEST OF THE COUNTY ROAD.

SURVEYORS CERTIFICATION
I HEREBY CERTIFY THAT THE ABOVE PLAT AND DEED WAS SURVEYED UNDER MY DIRECTION AND IS CORRECT TO THE BEST OF MY KNOWLEDGE AND ABILITY.
Mary Ruth Knoff
KNOX SURVEYORS

Pleasure Heights

2nd Addition

BENTON Co. ARKANSAS

KNOX SURVEYORS
1519 W. HURTSVILLE
SPRINGDALE, ARKANSAS

FILED FOR RECORD
At 4:20 O'clock P. M.

MAY 3 1963

JOSEPHINE R. HEYLAND
Clerk and Recorder
BENTON COUNTY, ARK.

NOTE:
IRON PINS SET AT ALL LOT CORNERS