

FILE

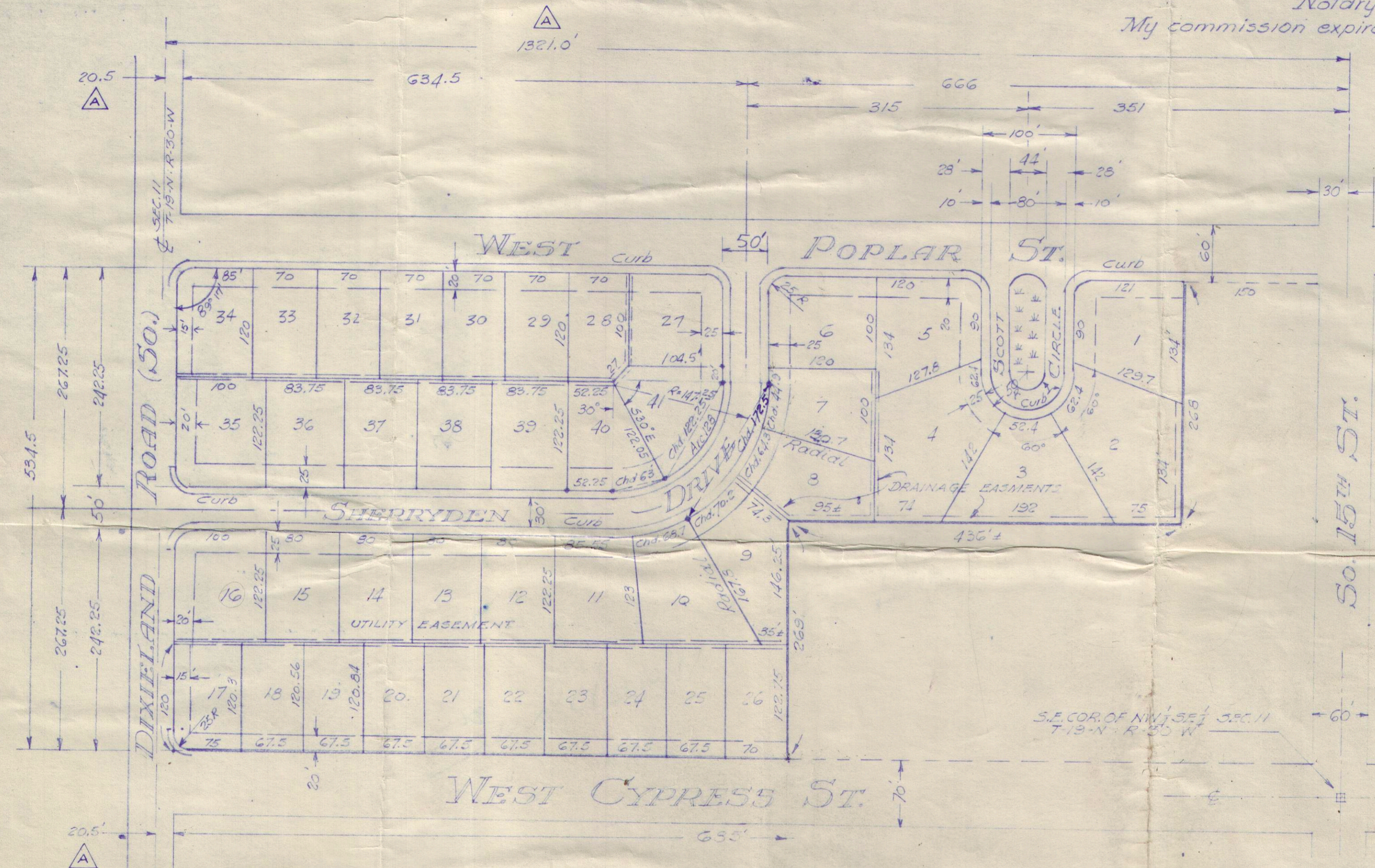
OWNERS CERTIFICATE & DEDICATION
 We, the undersigned, do hereby certify that we are the sole owners of the above platted land and do hereby dedicate the streets and easements shown for the use of the public.

Mr. Mark Doline Bank of Bentonville
Challen by *John D. Thigpen* President
E. J. Watson
Thur Williams
 Subscribed and sworn to before me this 11th day of March 1960.

[Signature]
 Notary Public
 My commission expires 1-2-64

APPROVED & RECOMMENDED
 By the Rogers City Planning Commission this 12th day of February 1960.
Dale Chinty
 Chairman

ACCEPTANCE
 Accepted this ___ day of ___ 1960
W. S. Rickett
 Mayor
W. B. Bland
 City Clerk



SUNDOWN SUB-DIVISION
 ROGERS, ARKANSAS
 A part of Block 3, Felker Sub-Division of SE 1/4, Sec. 11
 T-13-N - R-30-W



Scale: 1" = 100'

FILED FOR RECORD
 At 12:00'clock 4 M.

MAR 11 1960
 SHERMAN KINYON
 Clerk and Recorder
 BENTON COUNTY, ARK.

REVISIONS
 Changed distance from West P.L. to C of Sec. 11 from 50.0 to 20.5 to correspond to 1321.0' found by survey Feb. 1, 1960 to be correct distance from N-S E Sec. 11 to SE Cor. NW 1/4 Sec. 11
H. F. Bennett

Certified Correct
John E. Mahaffey
 Ark. P.E. No 811

A REPEAT OF SUNDOWN SUB-DIVISION
 ROGERS, ARKANSAS

DRWN. BY <i>J.E.M.</i>	John E. Mahaffey and Associates Consulting Engineers Fayetteville, Ark.	DATE Feb. 1960
CHKD BY <i>m.e.</i>		SHEET NO. 1
SCALE 1" = 100'		OF 1
		JOB NO. 1143 F.D. 30