

C-164



Sunny Acres
Sub.
Rogers

Benton County, Arkansas.

Plat of Sunny Acres Subdivision of part
of the SW $\frac{1}{4}$ of the SW $\frac{1}{4}$ of Sec. 13, Twp. 19 N,
R. 5 W.

Scale - 1 in. Eq. 100 ft June, 1960.

Sheet 1 of 2 sheets.

R.F. Burt
County

Benton County, Arkansas.

SUBDIVISION

Legal description, Certification and Dedication.

Legal Description.

Part of the SW 1/4 of the SW 1/4 of Sec. 13, Twp. 19 n, R 30 W described as beginning at a point 170 ft. West of the SE corner of said 40 acre tract, ran thence North 160 ft., thence East 170 ft. to the East line of said 40 acres, thence North 813 ft., thence West 328 ft., thence South 990 ft. to the South line of said 40 acres, thence East 168 ft. to the place of beginning, subject to the road on the South side thereof.

CERTIFICATION & DEDICATION.

I/we, the undersigned, do hereby certify that I/we are the sole owners of the herein platted land, and do hereby dedicate the streets and easements shown for the use of the public.

T. W. Harwood *Ruth Torwood*
James H. Johnston *Ann Johnston*

Subscribed and sworn to before me this 20th day of June, 1960.

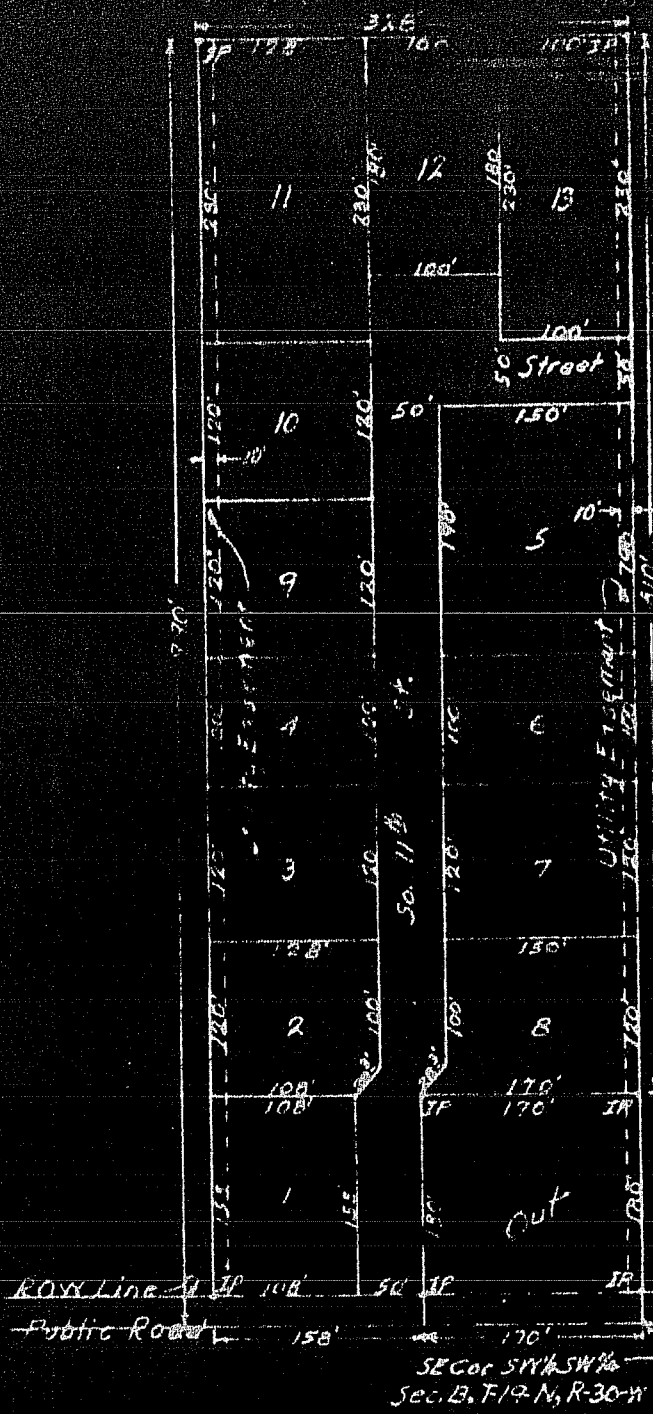
[Signature]
Notary Public.

My commission expires 6 October 1962

Approved and recommended by the Rogers City Planning Commission this 20th day of June, 1960.

James L. Stegner
Chairman.

Accepted this 20th day of June, 1960.



FILED FOR RECORD
 At 3 O'clock P.M.
 JUN 24 1960
 SHERMAN KINYON
 Clerk and Recorder
 BENTON COUNTY, ARK.

Benton County, Arkansas.

Exhibit of Sunny Area Subdivision of part of the SW 1/4 of the SW 1/4 of Sec. 13, Twp. 19 N., R. 30 W.

Scale-1 in. Eq. 100 ft.

June, 1960.

Certified Correct

R.F. Bundy
 R.F. Bundy
 County Surveyor.