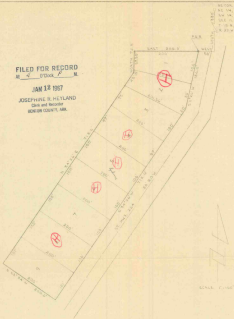


FILED FOR RECORD  
M 4 17000 1/4 N

JAN 14 1949

JOSEPHINE B. HEYLAND  
Clerk and Recorder  
BENTON COUNTY, ARK.



LEGAL DESCRIPTION  
Superior Water Subdivision

A tract of land in the NE 1/4 SW 1/4 Section 11, T-15-N, R-29-W, more particularly described as follows: From the Northeast corner NE 1/4 SW 1/4 Section 11, T-15-N, R-29-W, proceed South 250.0 feet; thence West 50.0 feet to the point of beginning; thence South 11°20' West, 100.0 feet; thence South 34°26' West, 710.0 feet; thence North 55°34' West, 200.0 feet; thence North 34°26' East, 710.0 feet; thence North 72.50 feet; thence East 200.0 feet to the point of beginning and containing 5.85 acres, more or less, all in Benton County, Arkansas.

NOTES:

The following easements are declared:

- a. Five foot easements for pipelines.
- b. Ten foot easements for overhead electrical lines.

These easements apply to all lot lines.

The property covered by this plat is subject to the covenants, restrictions, and easements contained in Bill of Assurance dated Jan. 11, 1949, and recorded in Book 586 Page 193, in the office of the CLERK AND RECORDER of Benton County, Arkansas, and said Bill of Assurance is made a part hereof by reference to the same as if set out in full on this plat.

Plat recorded in Plat Book 6 Page 163.

We hereby certify that we are the owner of the property shown and described herein that we accept the plan of subdivision and dedicate all streets to public use as shown.

Attest

By Robert R. Robinson  
Robert R. Robinson, Sec.-Treas.

By Joe Robinson  
Joe Robinson, President

I hereby certify that the plat shown and described herein is a true and accurate survey and that the corner and monuments have been set as shown.

BY W. H. HOLT & ASSOCIATES, INC.